

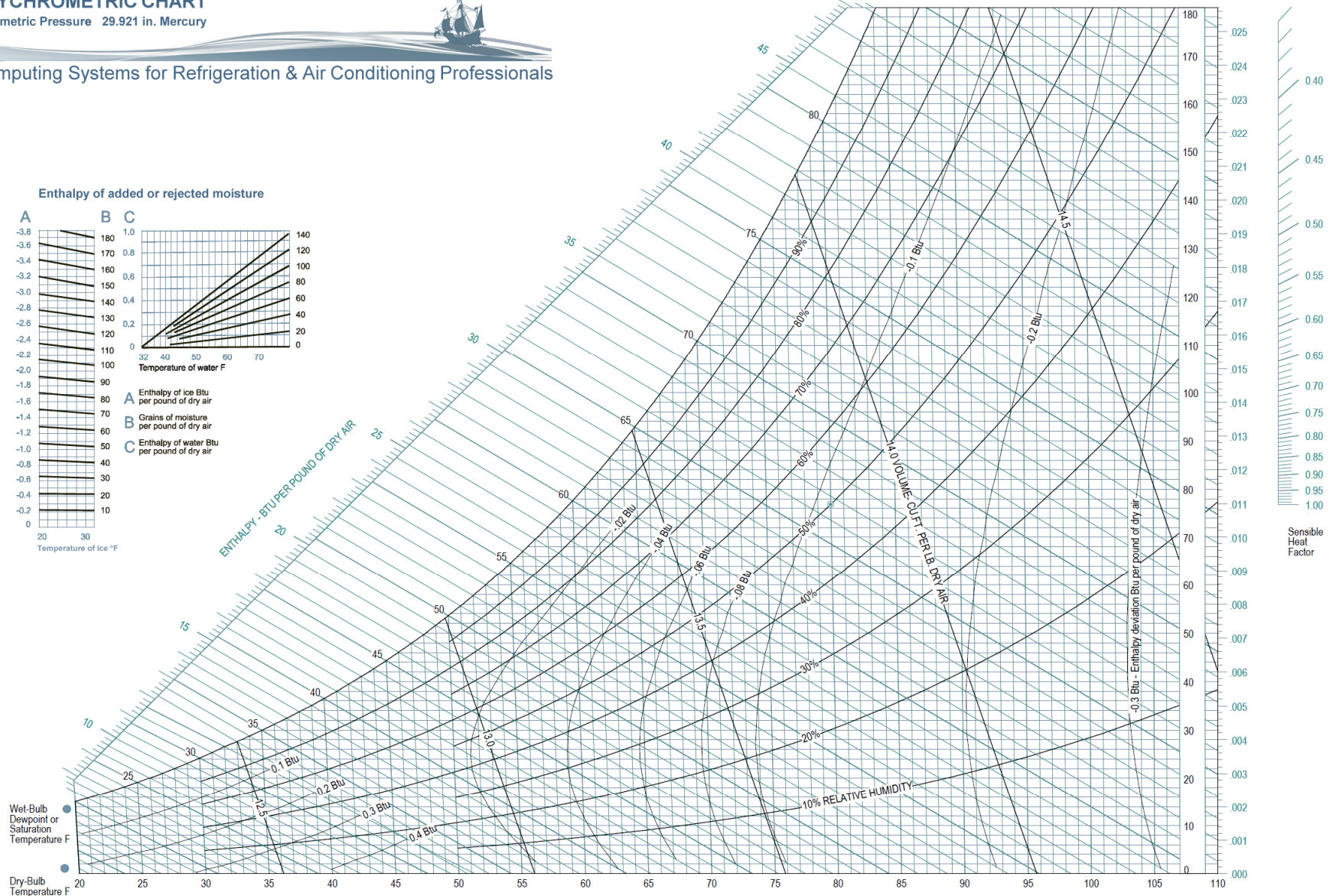
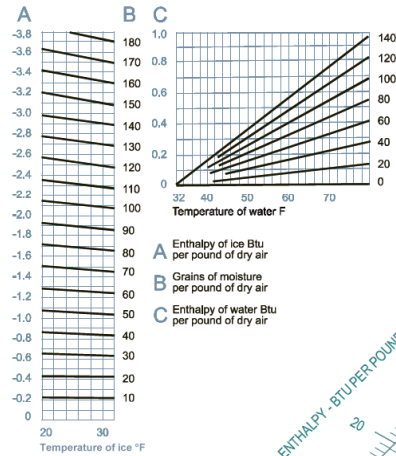
MISTRAL ASSOCIATES
PSYCHROMETRIC CHART
 Barometric Pressure 29.921 in. Mercury



Computing Systems for Refrigeration & Air Conditioning Professionals

Grains of moisture per pound of dry air Pounds of moisture per pound of dry air

Enthalpy of added or rejected moisture



Below 32°F properties and enthalpy deviation lines are for ice